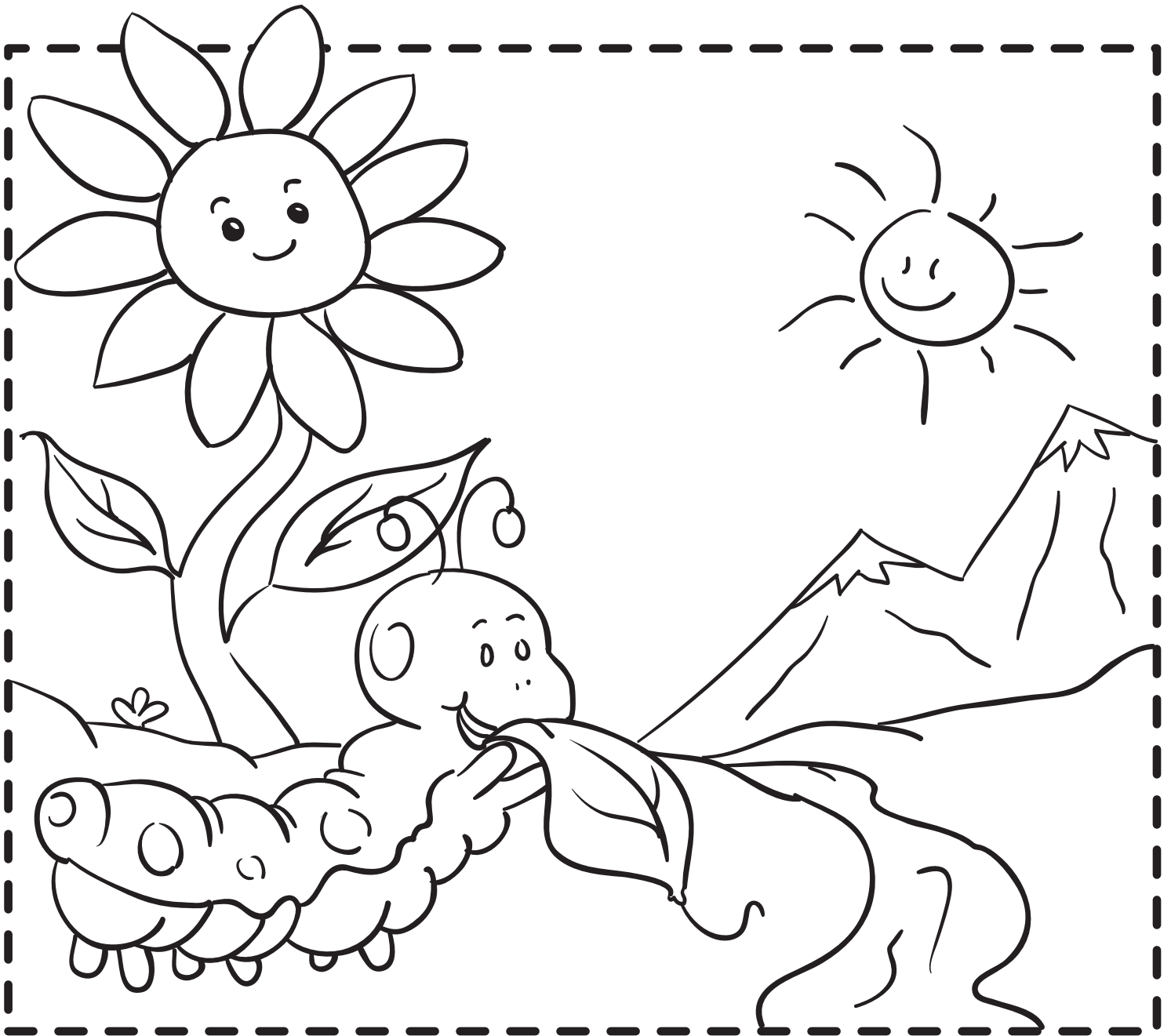


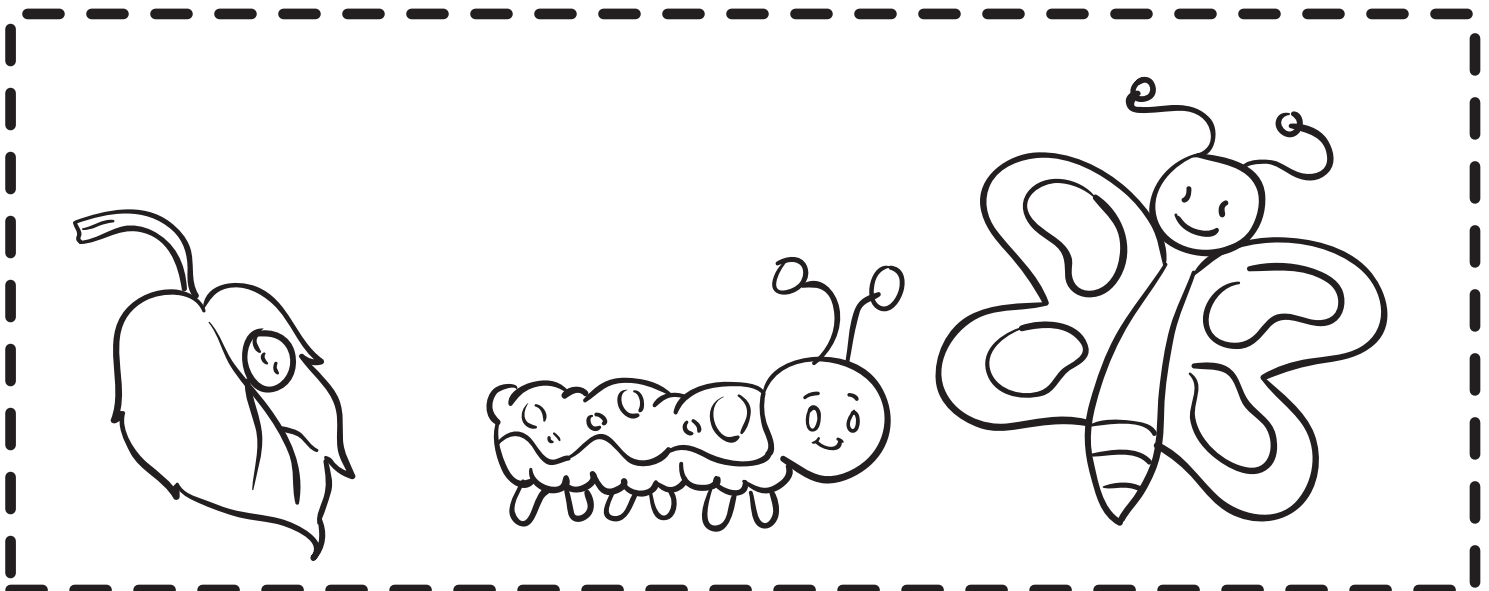
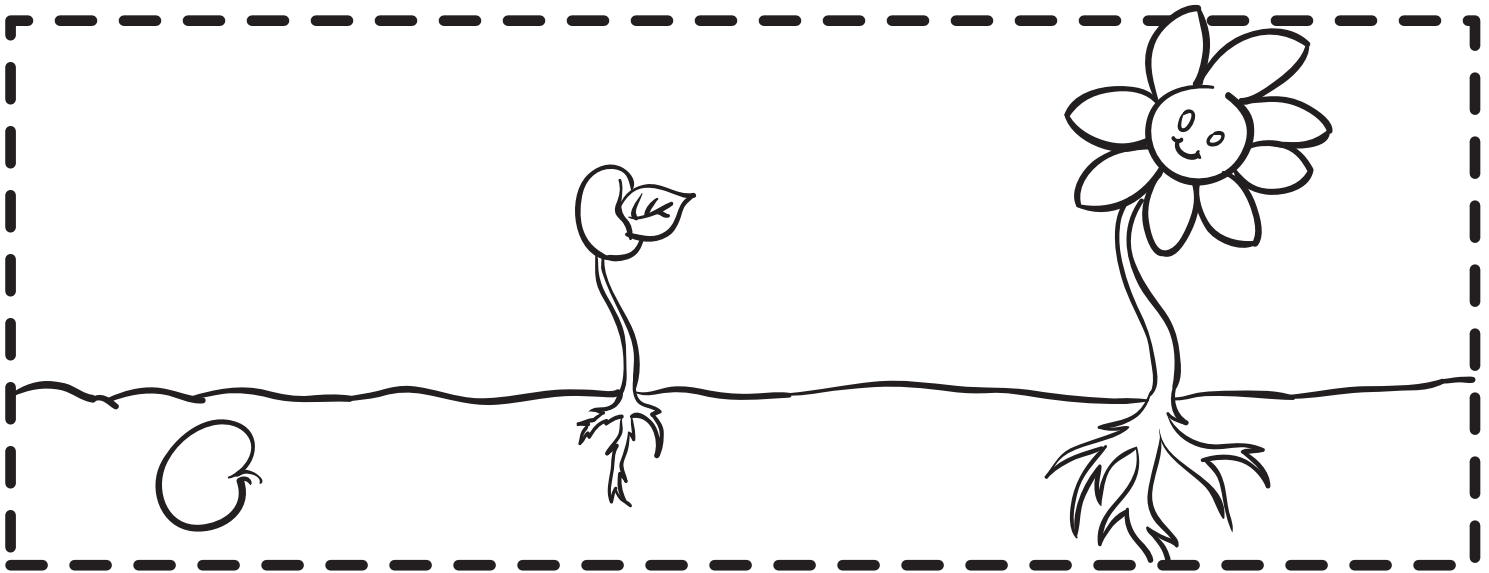
---

All living things need **air**, **water**, and, **energy** to survive!  
Plants get their energy from the sun, and animals  
get their energy from food.



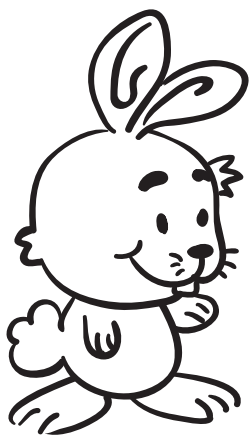
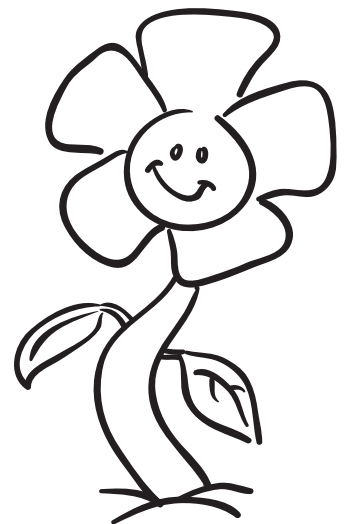
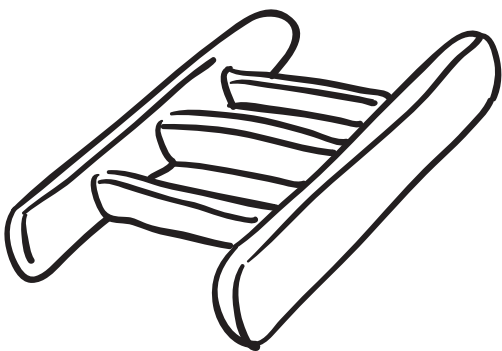
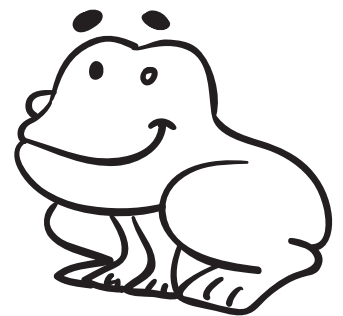
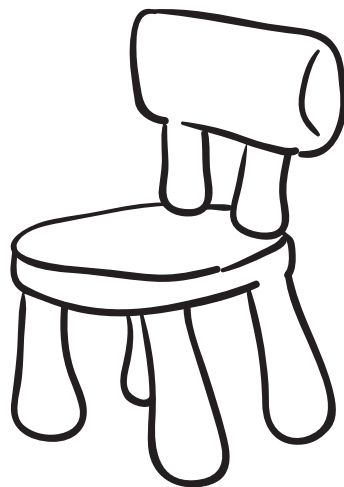
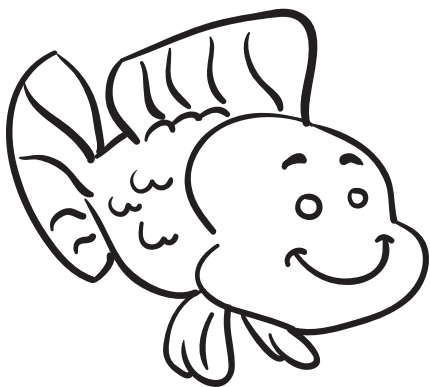
---

All living things can move by themselves and grow bigger!  
Plants move very slowly as they grow. Animals also grow slowly, and they can move around whenever they want.



---

Living things can be plants or animals, just like you! They need food, air and water to live. A living thing can also move all by itself and grow bigger! Circle all the objects that are living things.



---

Living things can be plants or animals, just like you!

All living things need **food**, **air** and **water** to live.

A living thing can move by itself and grow bigger.

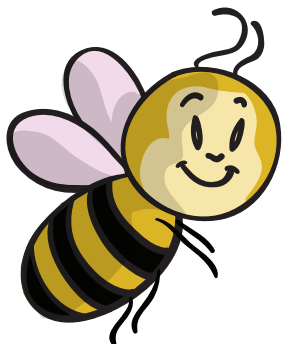
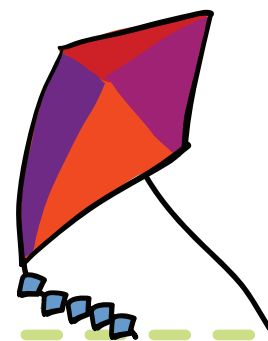
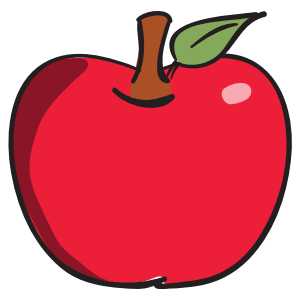
Use a pair of scissors to cut out all the living and non-living things on the next page, and paste them into the correct spots on this page.

---

***Living things***

***Non-living things***



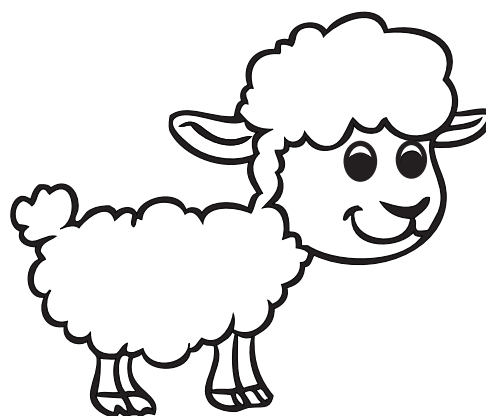


---

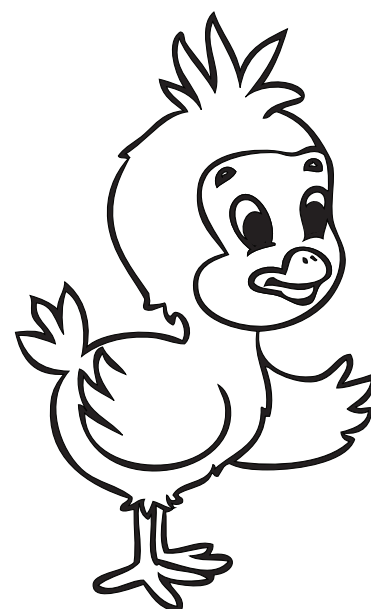
Color the baby animals!



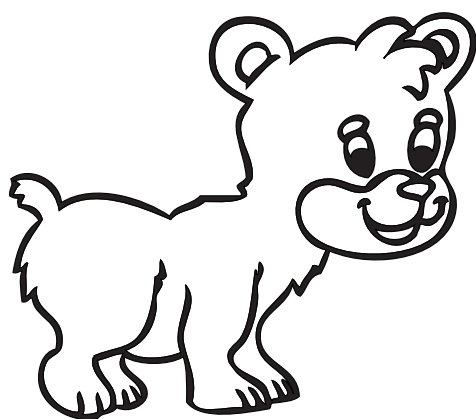
*Colt*



*Lamb*



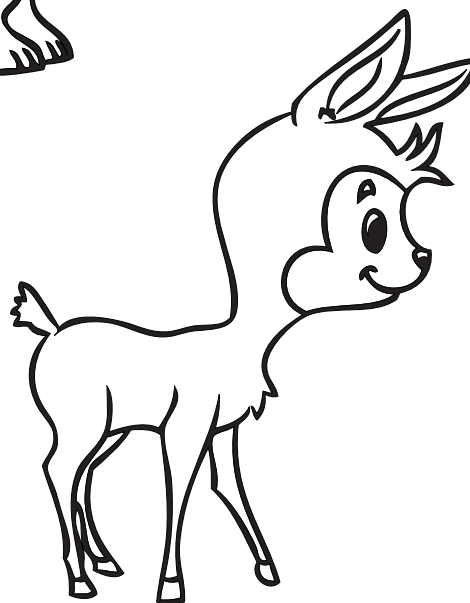
*Chick*



*Cub*



*Joey*

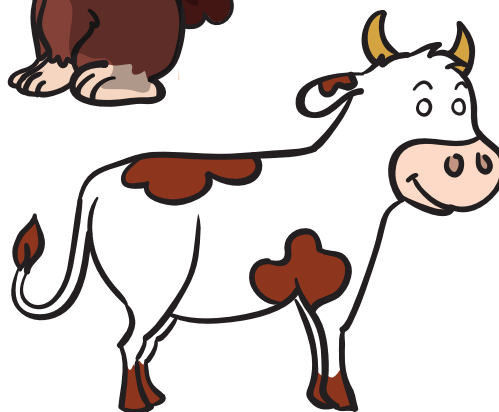
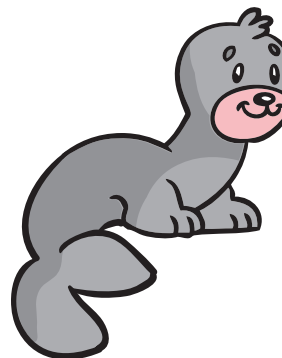
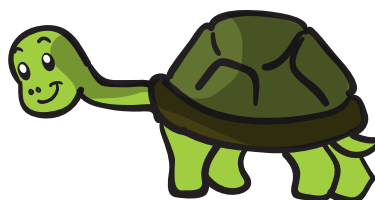
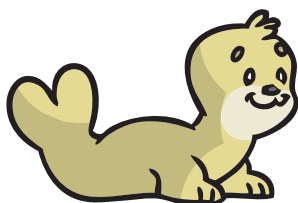
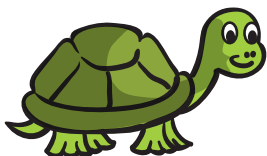
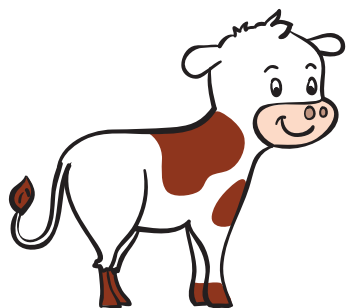


*Fawn*

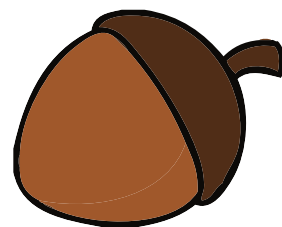
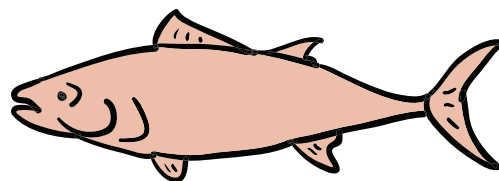
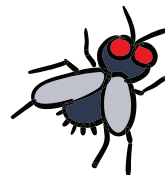
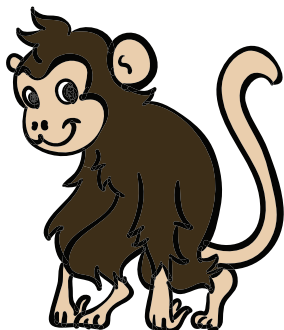
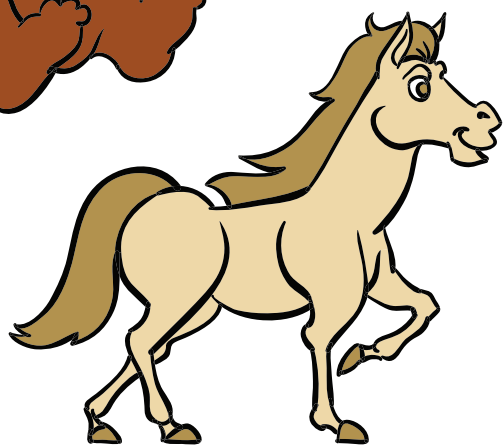
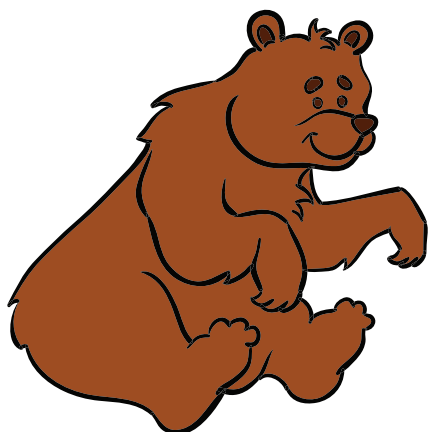


*Kid*

Match the baby animal to its mama!

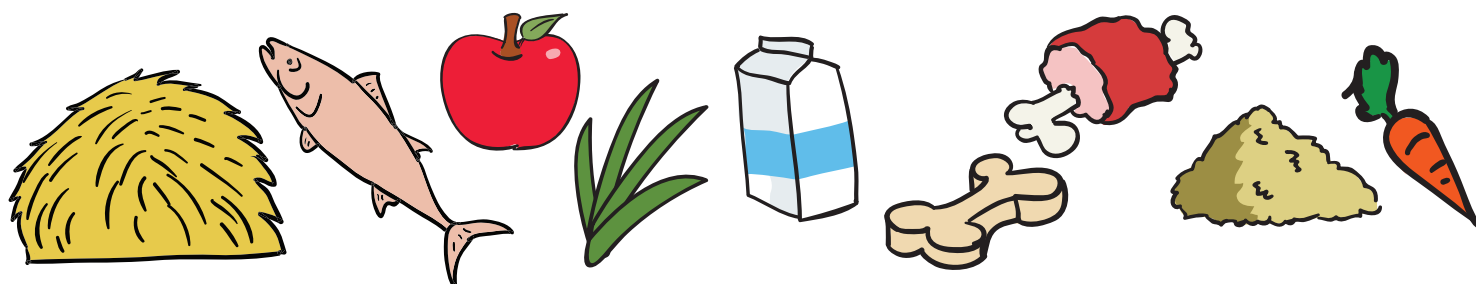
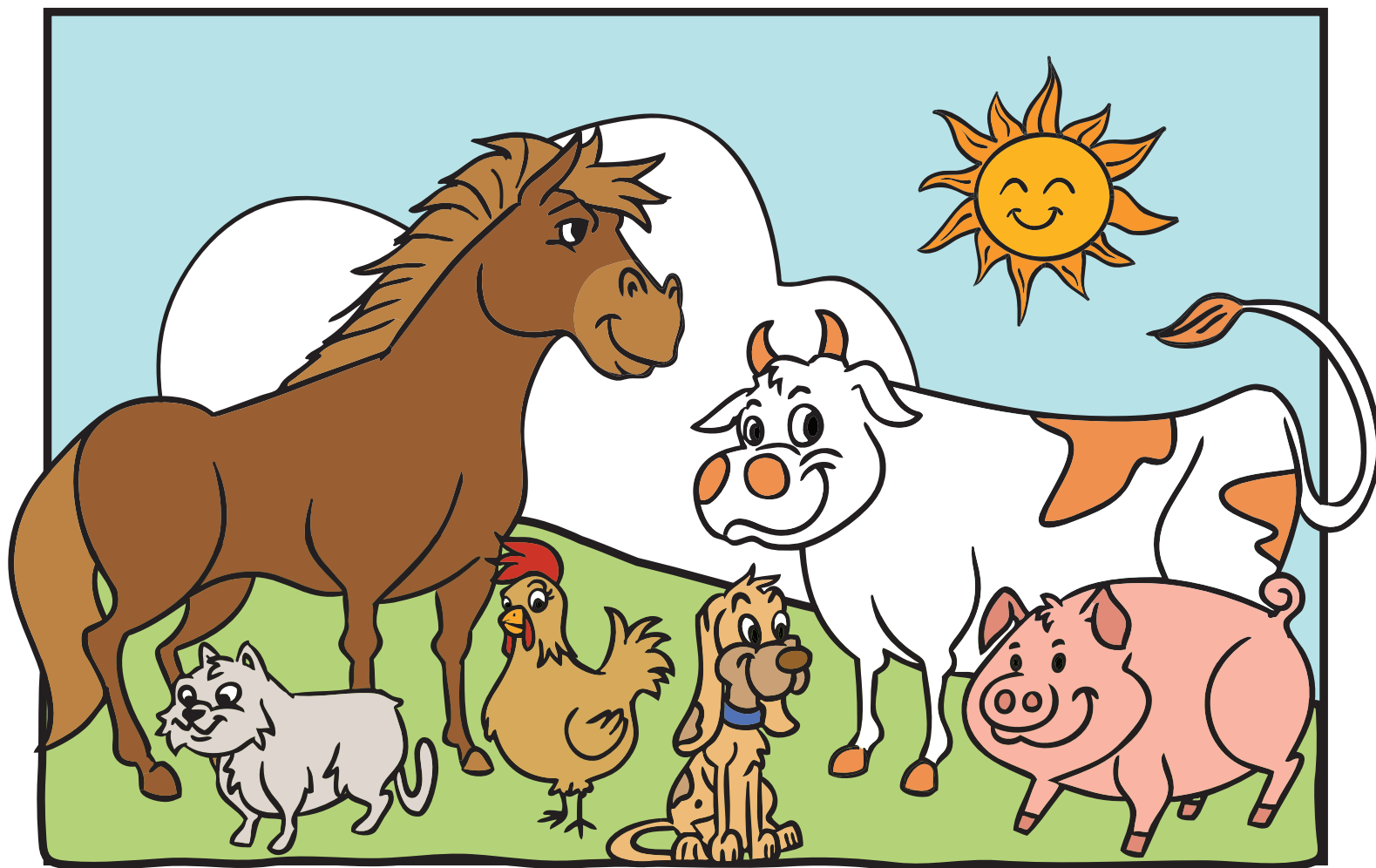


These hungry animals need to eat!  
Match each animal to the food that it likes to eat.





It's dinner time at the barnyard!  
Draw a line from each animal to the food it eats.



Would you eat any of these foods?  
Circle the foods that you could eat for dinner.

---

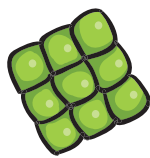
All animals have different kinds of body coverings.



Some animals have fur.  
These animals are called **mammals**.



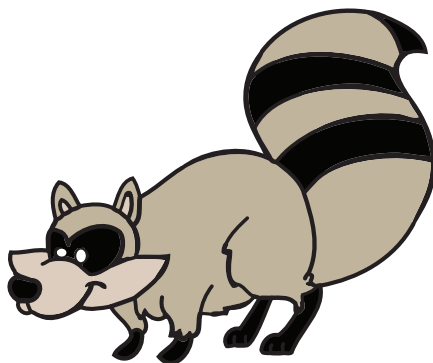
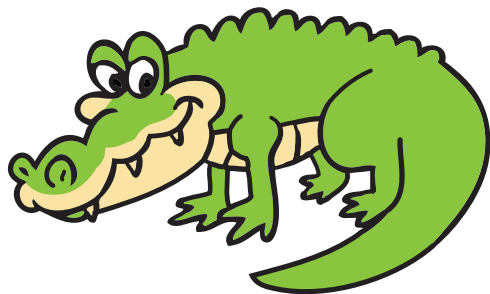
Some animals have feathers.  
These animals are called **birds**.



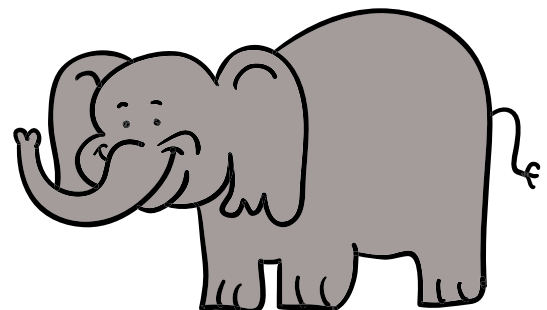
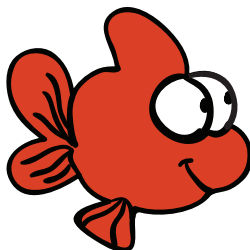
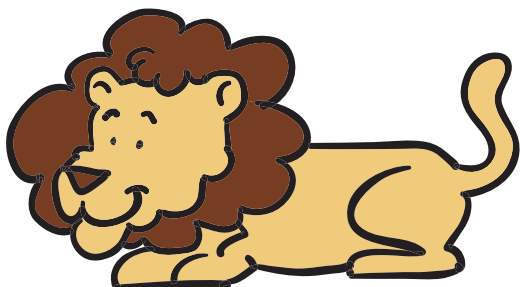
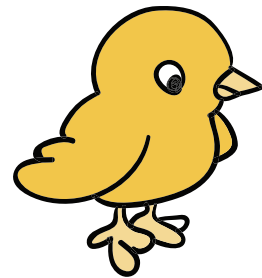
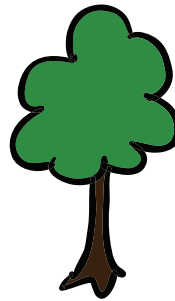
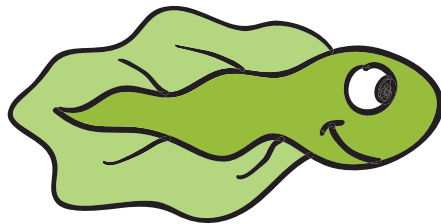
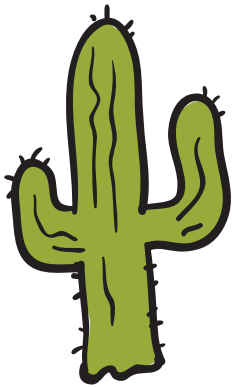
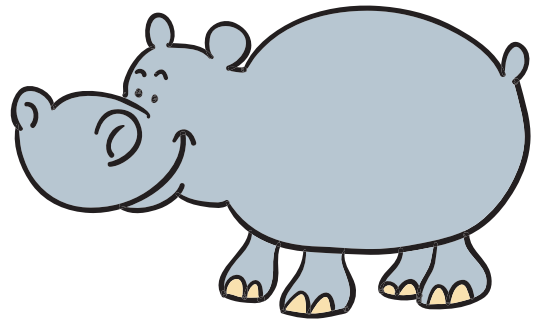
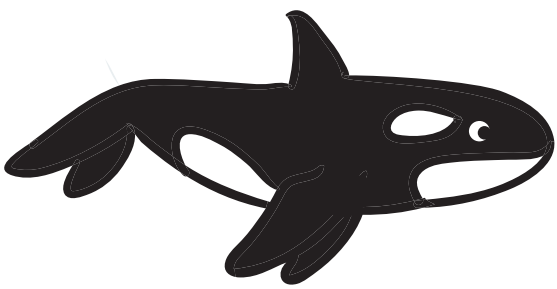
Other animals have scales.  
These animals are called **reptiles**.

---

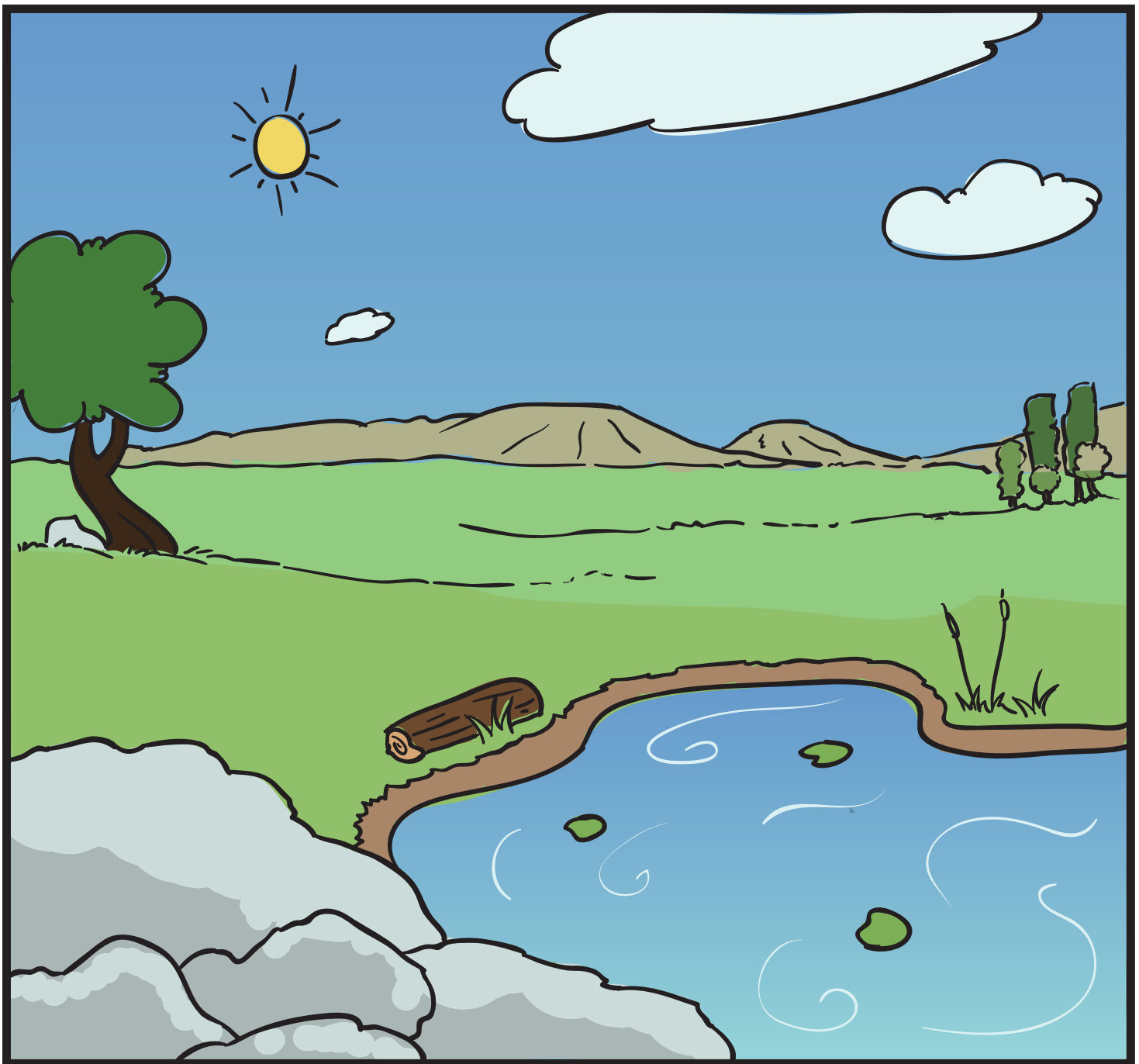
Can you tell which of these are mammals, reptiles or birds?



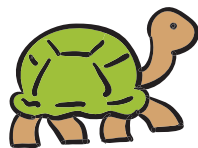
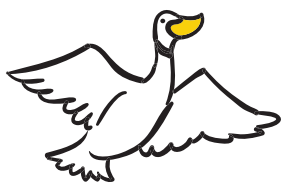
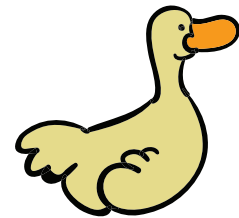
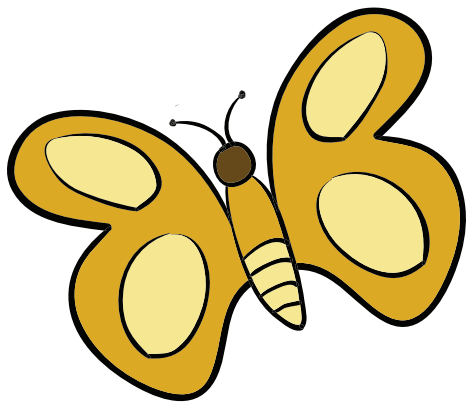
All living things come in different shapes and sizes! Circle the animals and plants that are *small* and put a square around the animals and plants that are *big*.



Some animals *fly*, some animals *swim* and some animals *walk*!  
Cut out the animals on page 2 and paste them into the correct spot in this meadow.

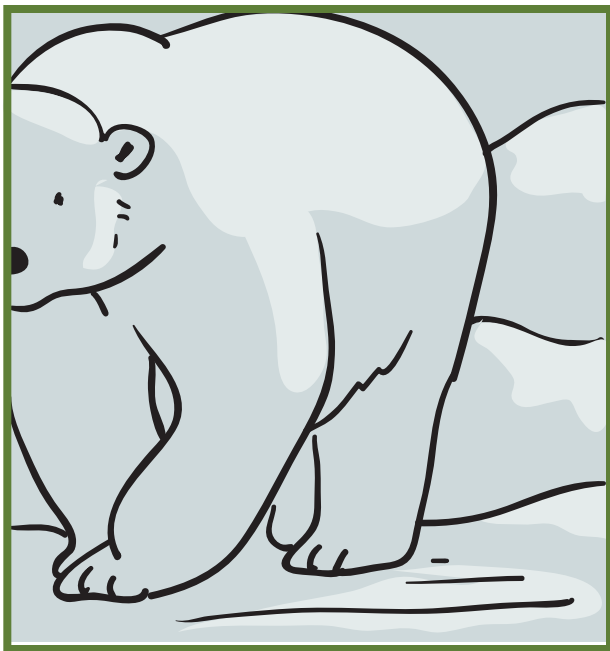


Cut out the animals and paste them into their habitats on page 1.  
*Hint: Some animals move in more than one way. Can you find which of these animals can fly AND swim, or swim AND crawl?*



---

Animals have different patterns and colors to help them hide in nature. Look at the animals below. Can you tell which animals these are? Where can each of these animals hide?



---

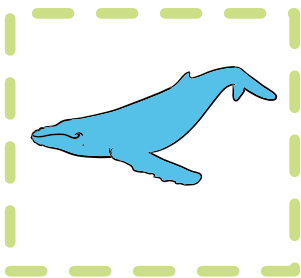
Can you tell which animals these are? Paste the animal that best describes the fun fact.

The biggest animal in the world is the blue whale.

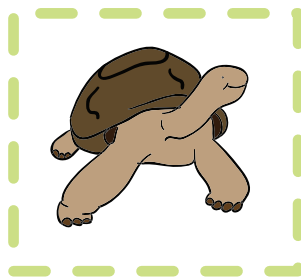
The smallest bird in the world is the bee hummingbird.

The oldest living animal in the world is a giant tortoise named Jonathan.

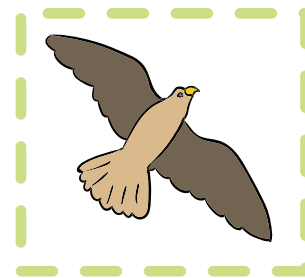
The fastest animal in the world is the peregrine falcon.



(100 feet long)



(180 years old)



(175 miles per hour)

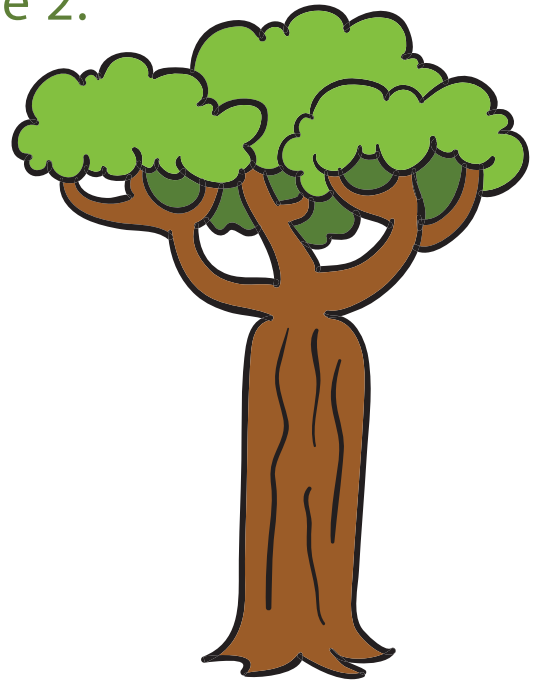


(2 inches tall)

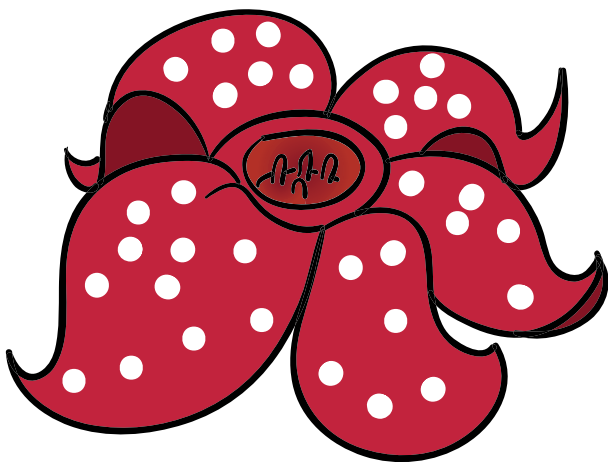
There are some very interesting plants on our earth! Match these plants to their fun fact on page 2.



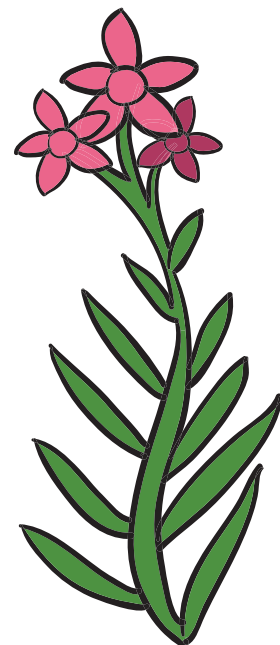
Venus Flytrap



Baobob Tree



Rafflesia



Oleander



Match each fun fact with the corresponding plant on page 1.

This plant catches flies to eat.

This large red flower smells bad!

This tree stores water in its trunk.

This may be the most poisonous plant in the world.