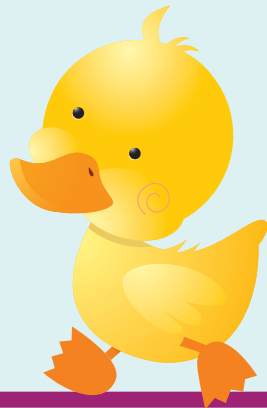
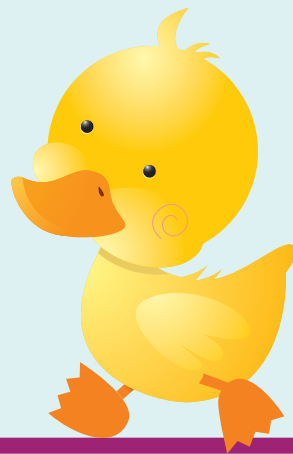
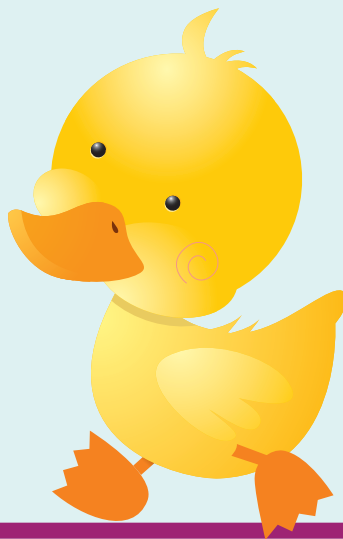


More or Less?

P
Preschool



Big vs. **Small**

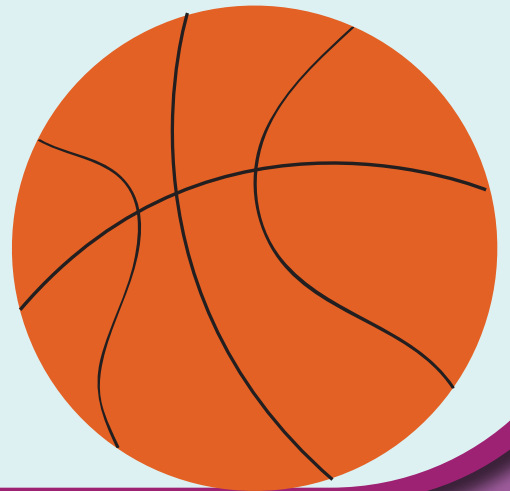


Table of Contents

More or Less?

More or Less? #1

More or Less? #2

More or Less? #3

More or Less? #4

More or Less? #5

More or Less? #6

More or Less? #7

More or Less? #8

More or Less? #9

Big vs. Small

Color & Compare! #1

Heavy vs. Light

Color & Compare! #2

Fewer vs. More

Fruity Number Fun

Veggie Garden

Earthworms!

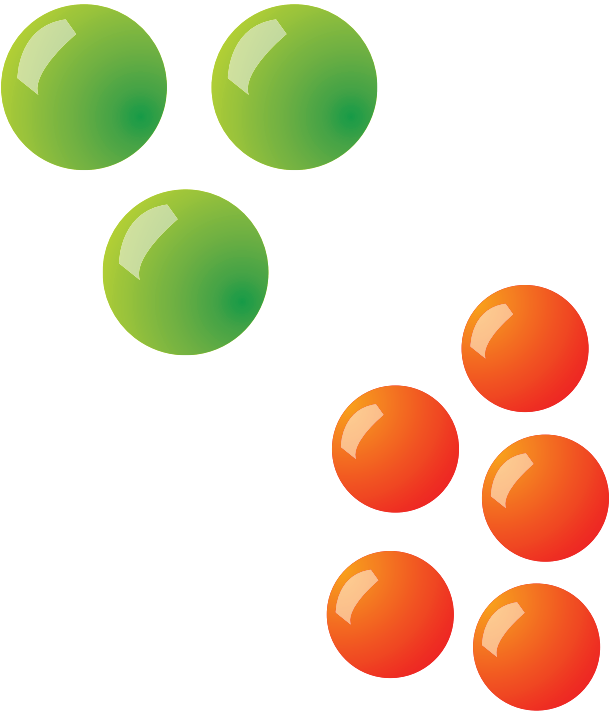
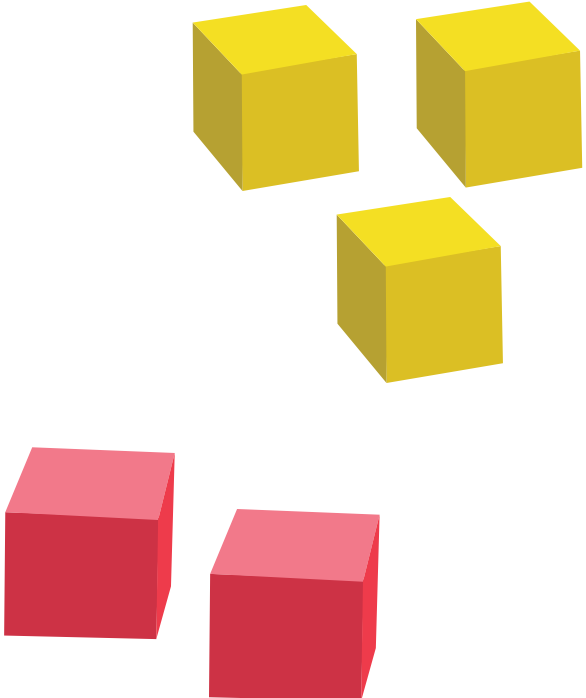
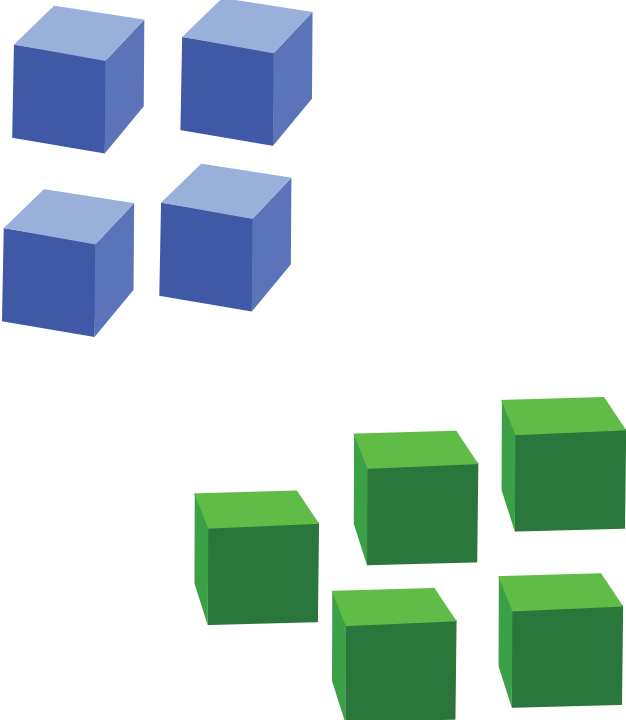
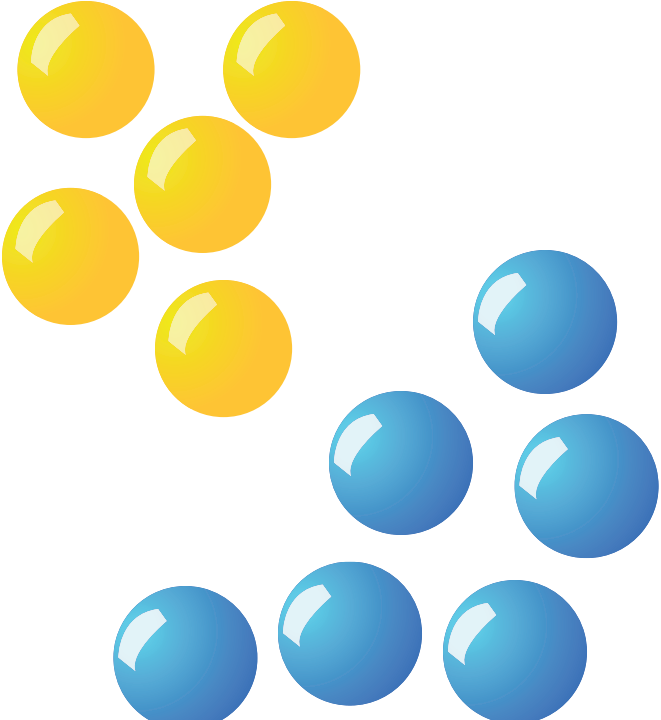
Compare Sizes #1

Compare Sizes #2

Certificate of Completion

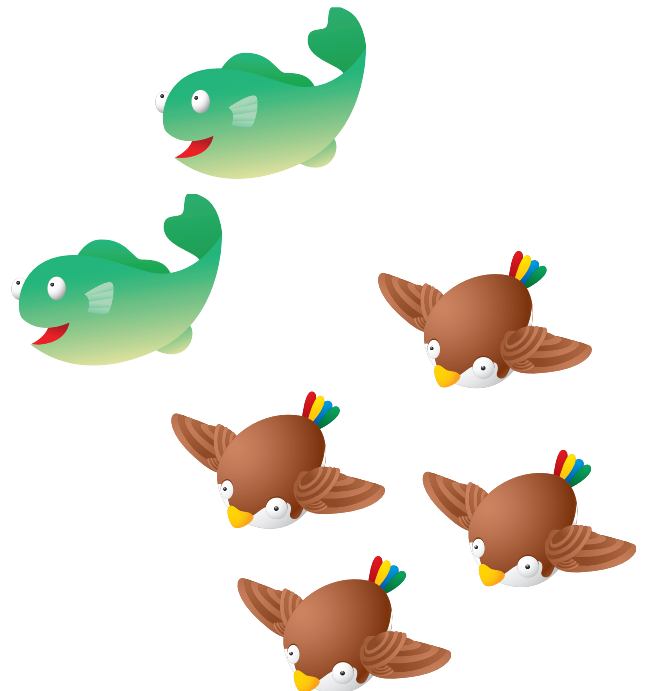
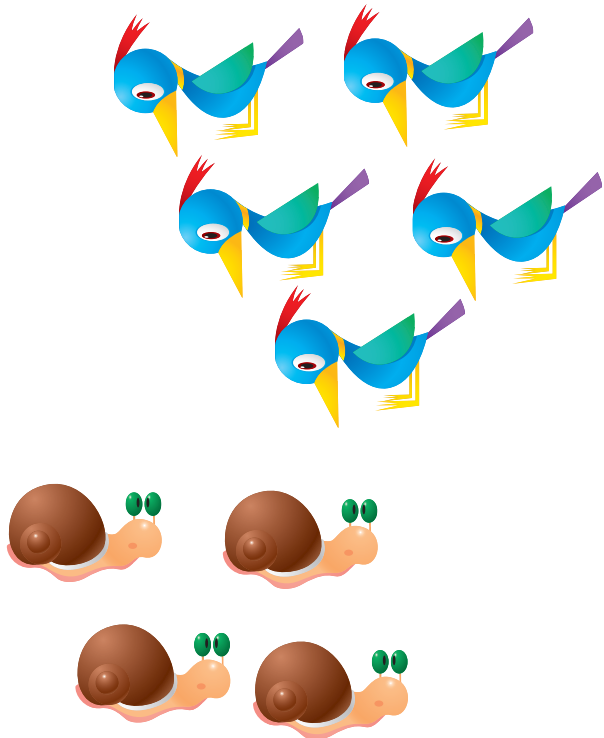
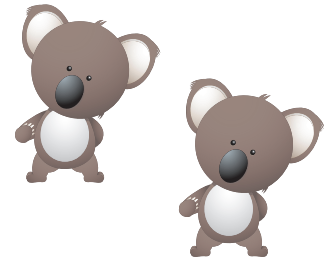
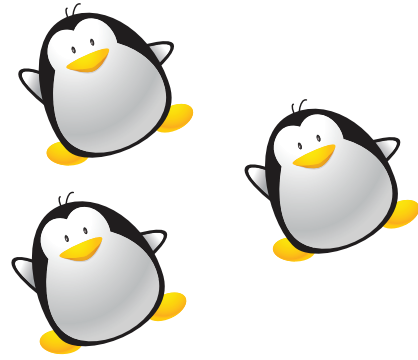
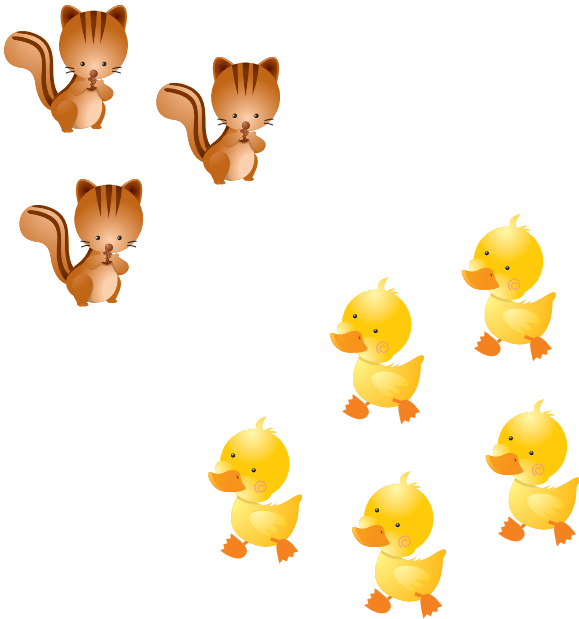
More or Less?

Look at the shapes in each box, and circle the group that has more.

 <p>A box containing two groups of spheres. The first group consists of three green spheres arranged in a triangle. The second group consists of five orange spheres arranged in a vertical column of three with two spheres on either side of the middle one.</p>	 <p>A box containing two groups of cubes. The first group consists of three yellow cubes arranged in a triangle. The second group consists of two red cubes arranged side-by-side.</p>
 <p>A box containing two groups of cubes. The first group consists of four blue cubes arranged in a 2x2 square. The second group consists of six green cubes arranged in two rows of three.</p>	 <p>A box containing two groups of spheres. The first group consists of five yellow spheres arranged in a vertical column of three with two spheres on either side of the middle one. The second group consists of seven blue spheres arranged in two rows of three with one sphere centered between them.</p>

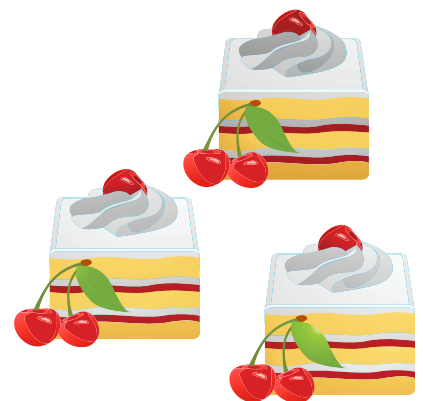
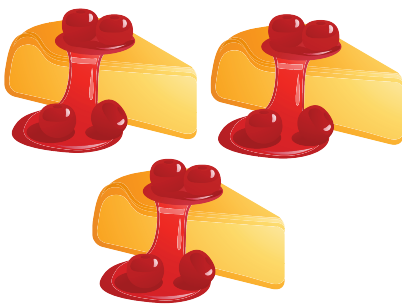
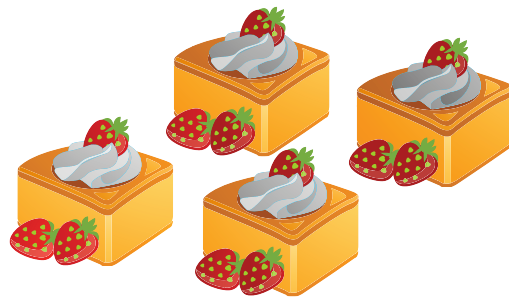
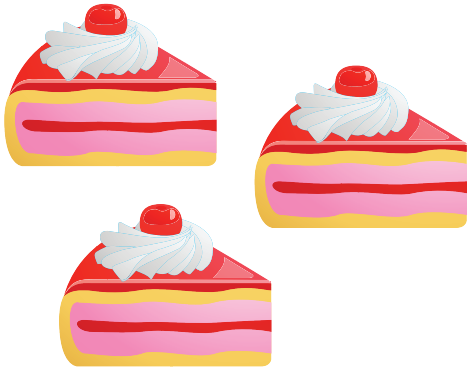
More or Less?

Look at the animals in each box, and circle the group that has more.



More or Less?

Look at the cakes in each box,
and circle the group that has more.



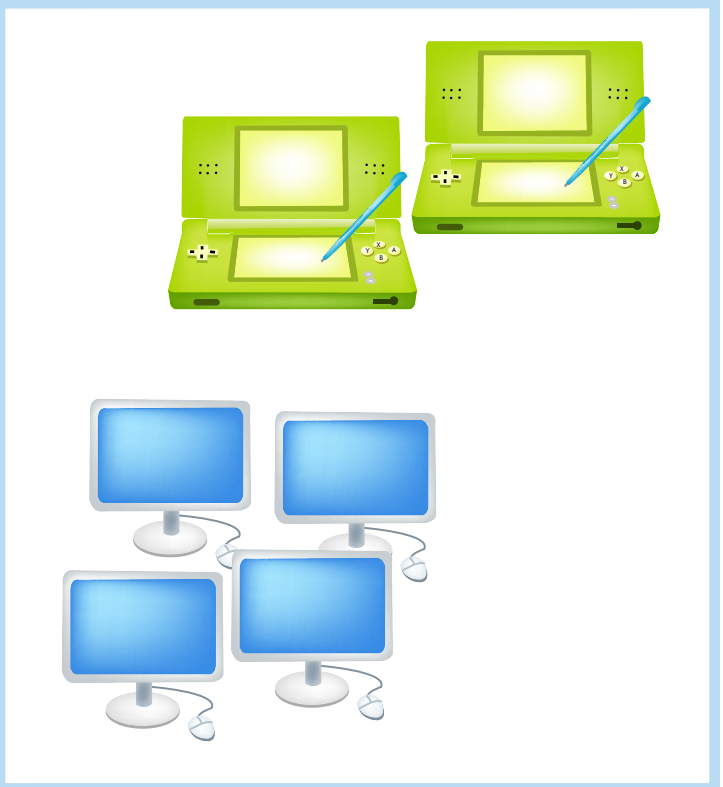
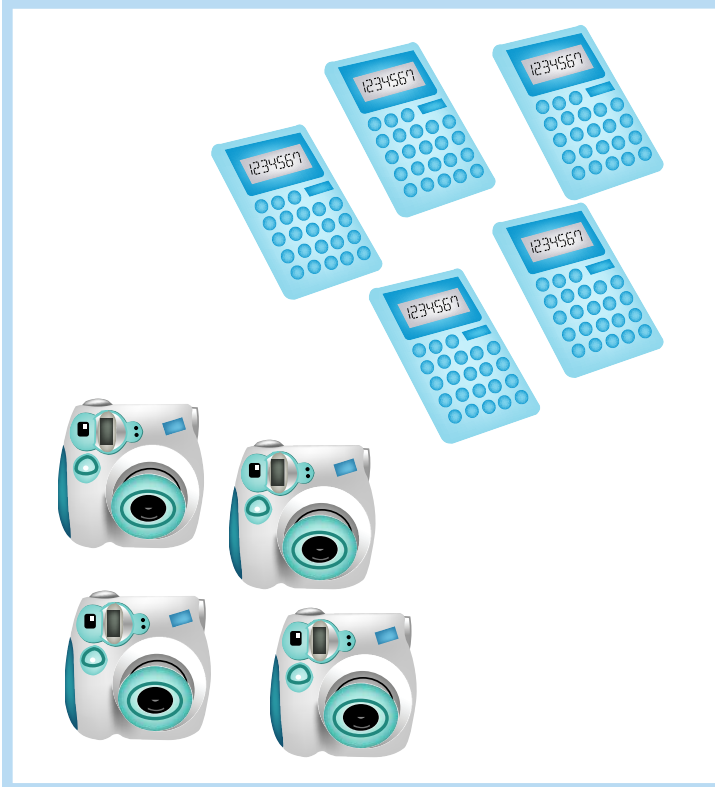
More or Less?

Look at the school supplies in each box, and circle the group that has more.

More or Less?

Look at the electronics in each box, and circle the group that has more.



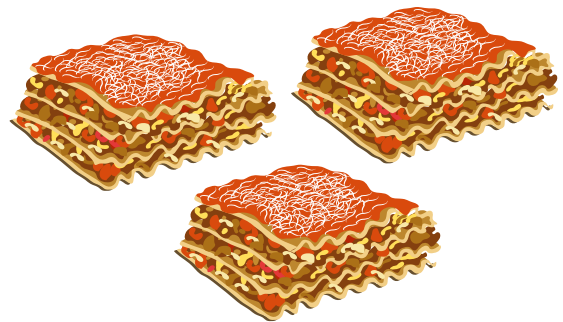
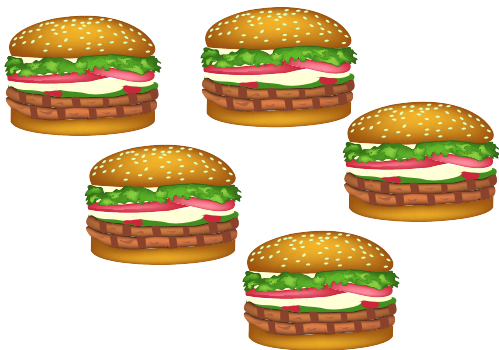
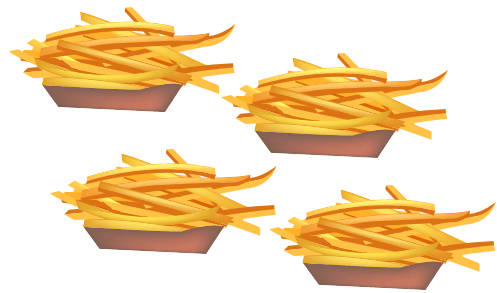
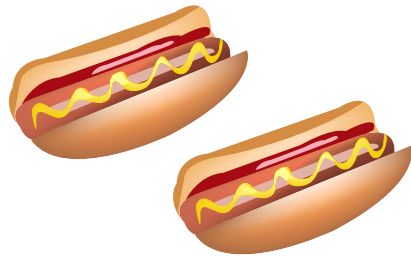
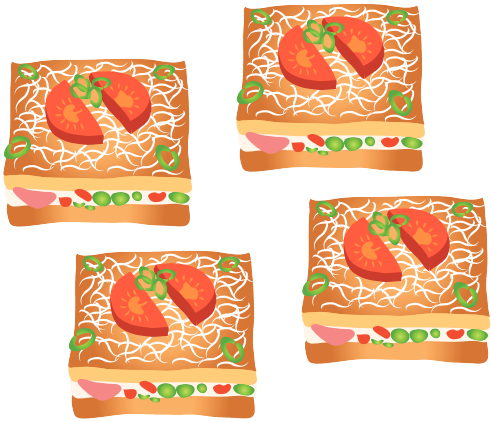
More or Less?

Look at the toy animals in each box, and circle the group that has more.

 <p>A group of 4 white sheep and 3 green penguins.</p>	 <p>A group of 5 pink hippos and 3 blue elephants.</p>
 <p>A group of 2 white rabbits and 3 yellow teddy bears.</p>	 <p>A group of 4 yellow dogs and 4 pink piggy banks.</p>

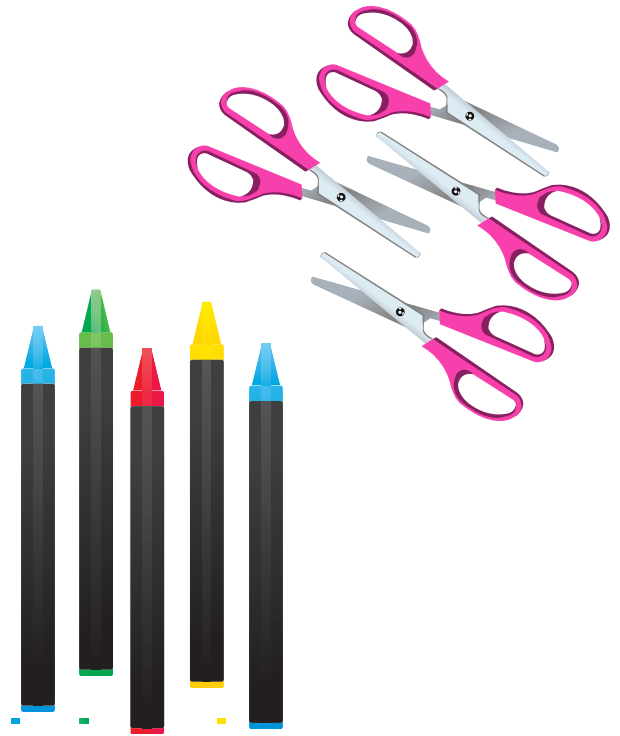
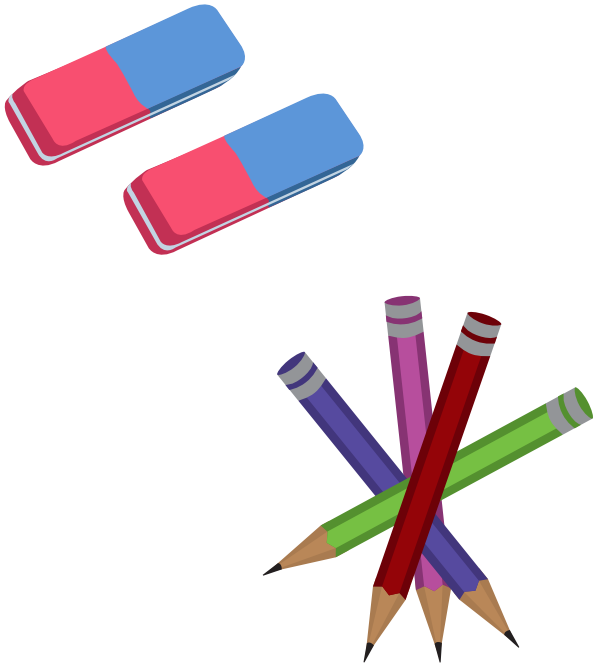
More or Less?

Look at the food in each box,
and circle the group that has more.




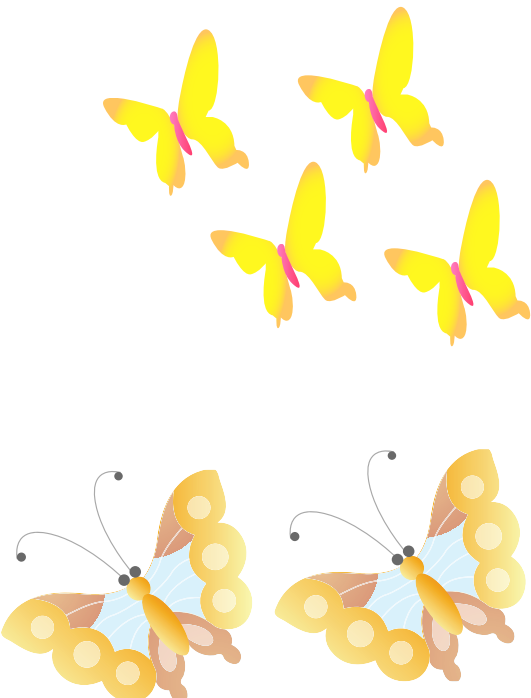
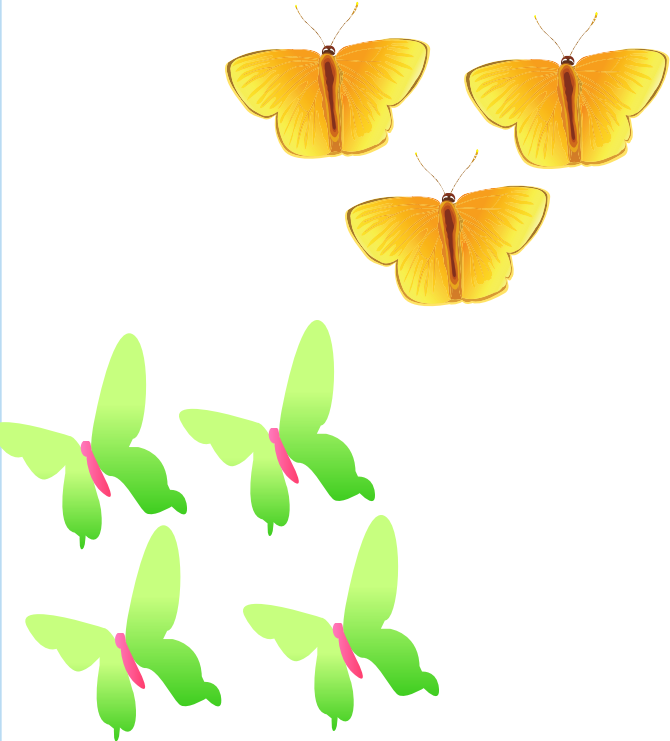
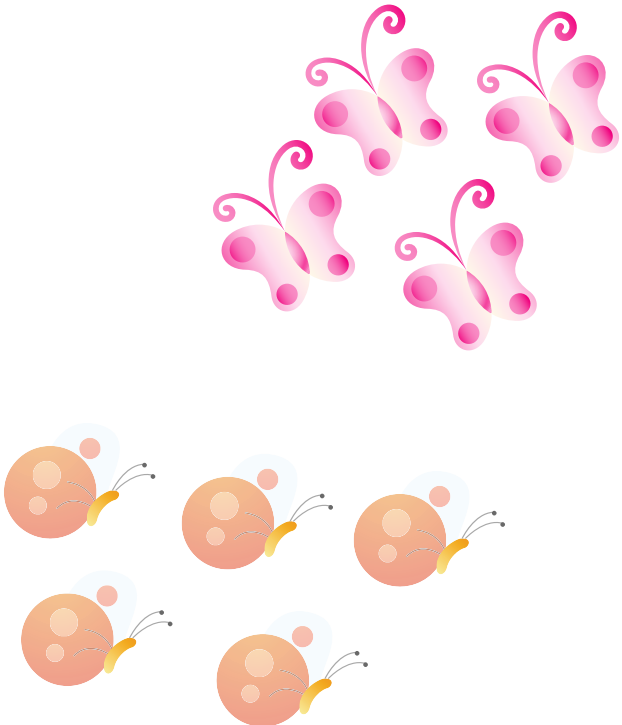
More or Less?

Look at the art supplies in each box, and circle the group that has more.



More or Less?

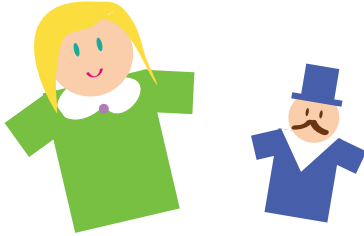
Look at the butterflies in each box, and circle the group that has more.

 <p>A group of five butterflies. Three are blue with white markings and antennae. Two are pink with yellow markings and antennae.</p>	 <p>A group of six butterflies. Four are yellow with pink markings. Two are brown and blue with yellow circular patterns.</p>
 <p>A group of seven butterflies. Three are orange with black markings. Four are green with pink markings.</p>	 <p>A group of nine butterflies. Four are pink with white markings and antennae. Five are brown with white spots and antennae.</p>

Big vs. Small

Look at the pictures below and answer the questions by circling the correct picture.

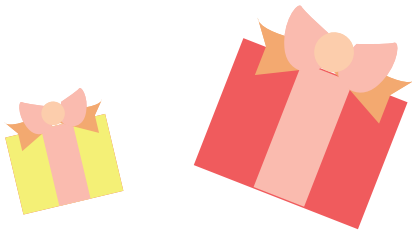
Which is *bigger*?



Which is *smaller*?



Which is *smaller*?



Which is *bigger*?



Draw a *smaller* ice cream.



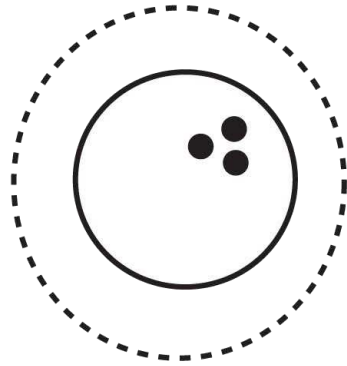
Draw a *bigger* fish.



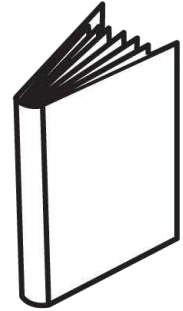
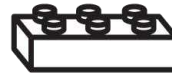
Color & Compare!

Color the objects and for each pair, circle which one weighs more.

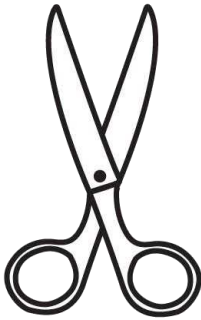
1.



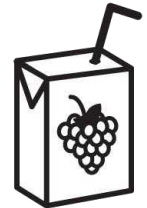
2.



3.



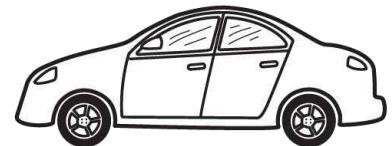
4.



5.



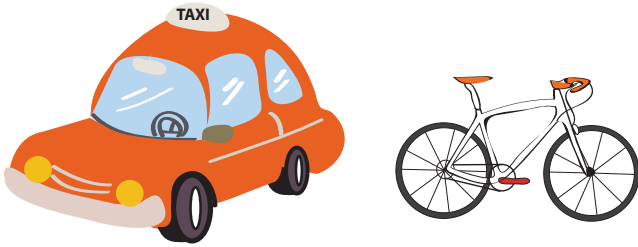
6.



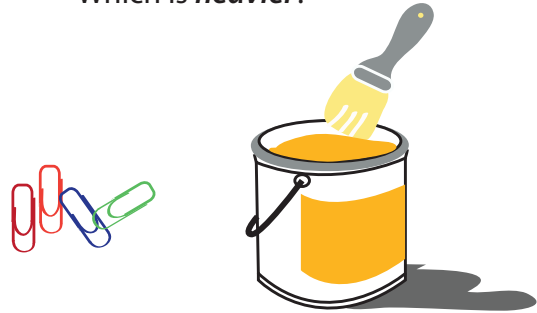
Heavy vs. Light

Look at the pictures below and answer the questions by circling the correct picture.

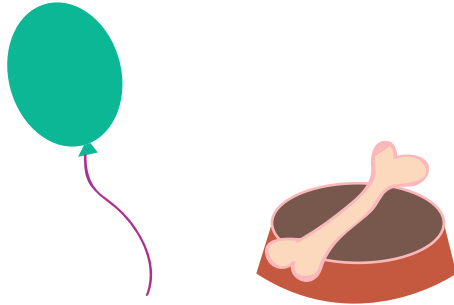
Which is *lighter*?



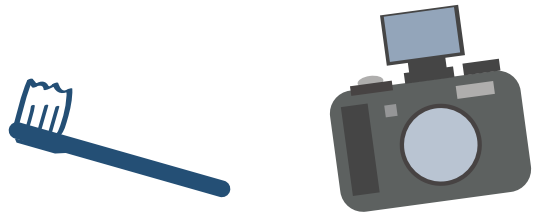
Which is *heavier*?



Which is *heavier*?



Which is *lighter*?



Draw a *lighter* animal.



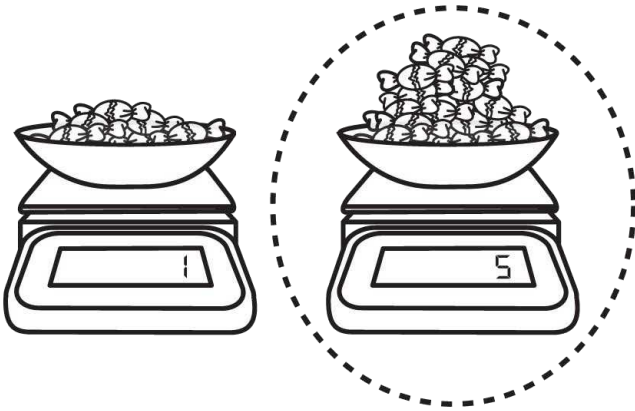
Draw a *heavier* animal.



Color & Compare!

Color the objects and for each pair, circle which one weighs more.
Use the scale to help you choose.

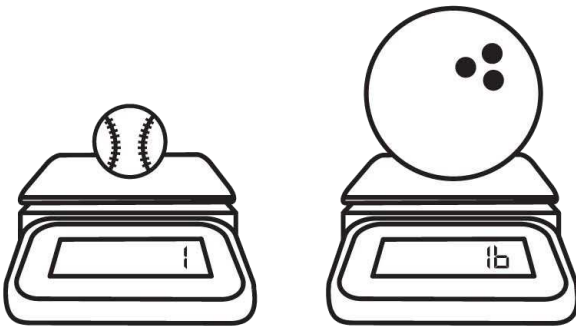
1.



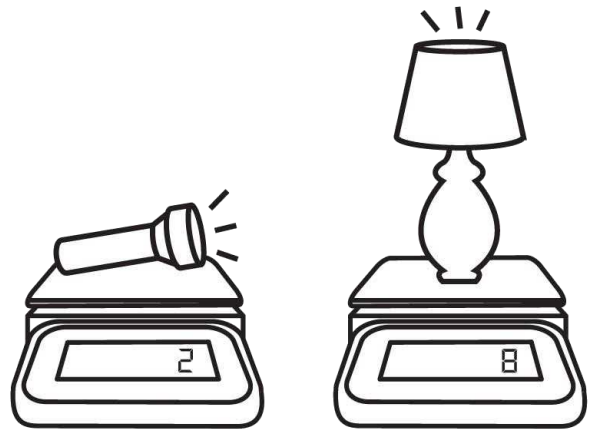
2.



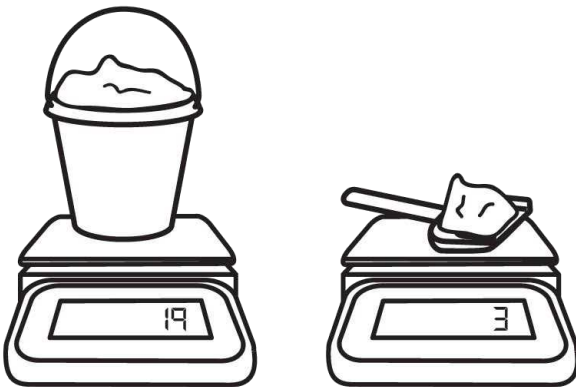
3.



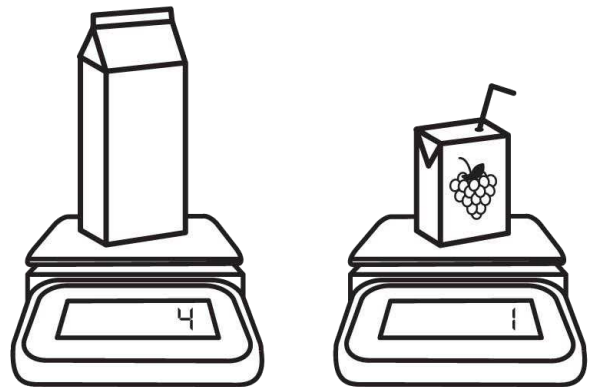
4.



5.



6.

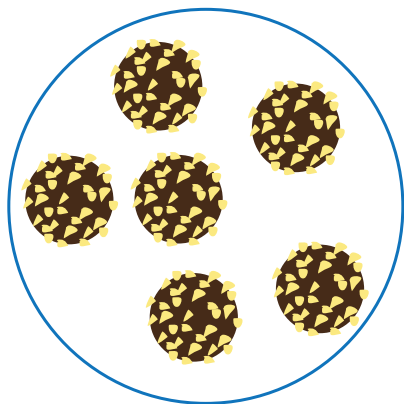
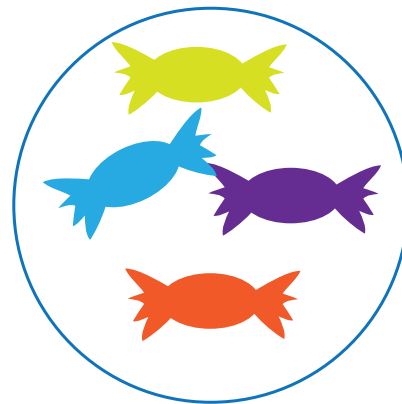
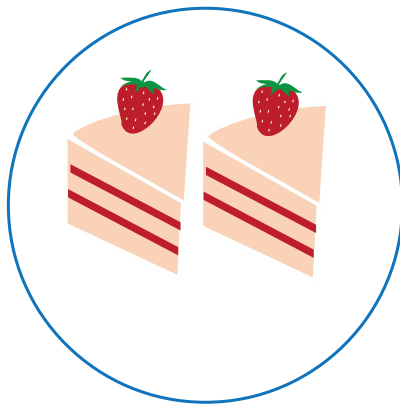


Fewer

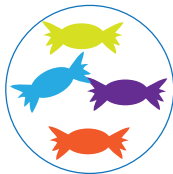
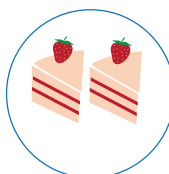
vs.

More

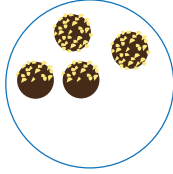
Look at the sweets below and write down how many there are in the space. Answer the questions below by drawing circles around the word fewer or more.



has (fewer/more) than



has (fewer/more) than

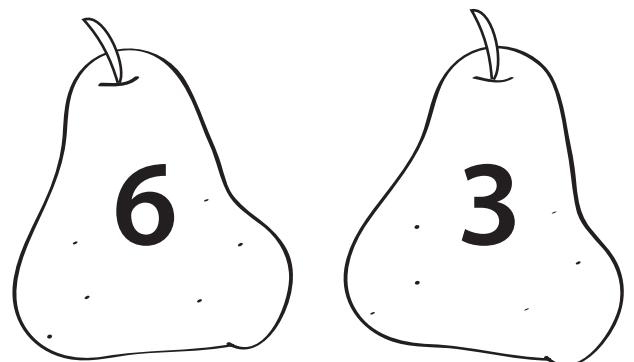
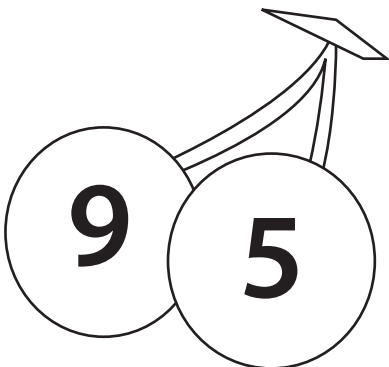
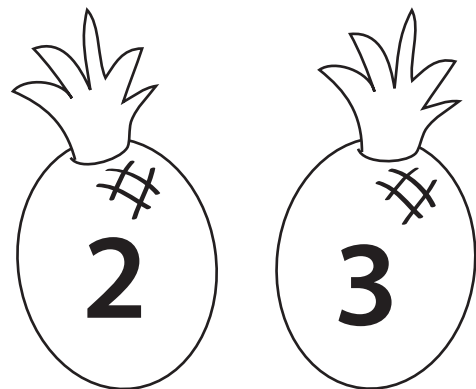
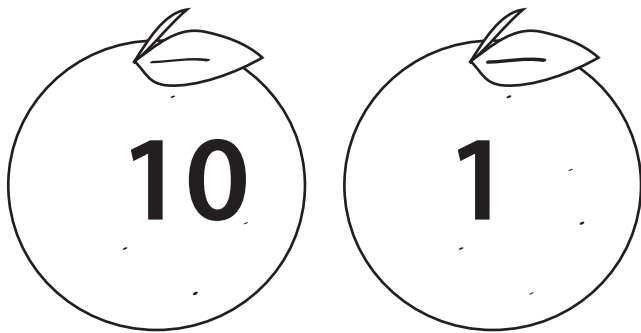
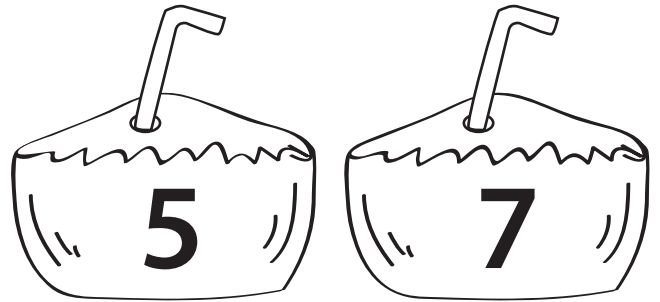
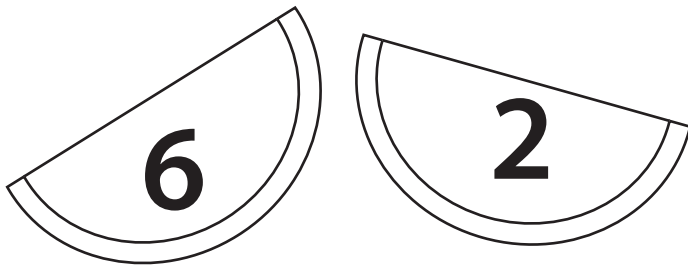
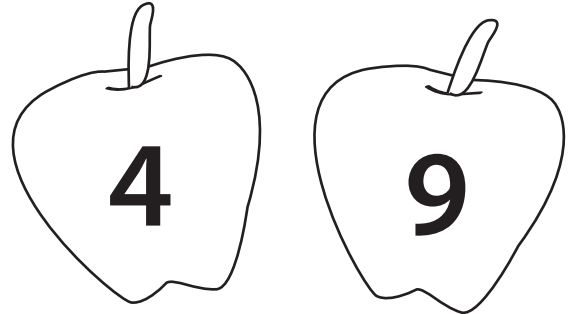
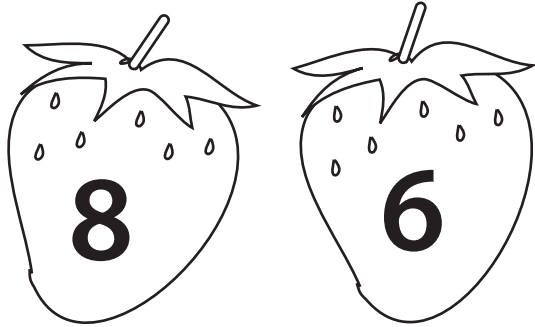


has (fewer/more) than



Fruity Number Fun

Compare the fruit, then color the one containing the larger number.

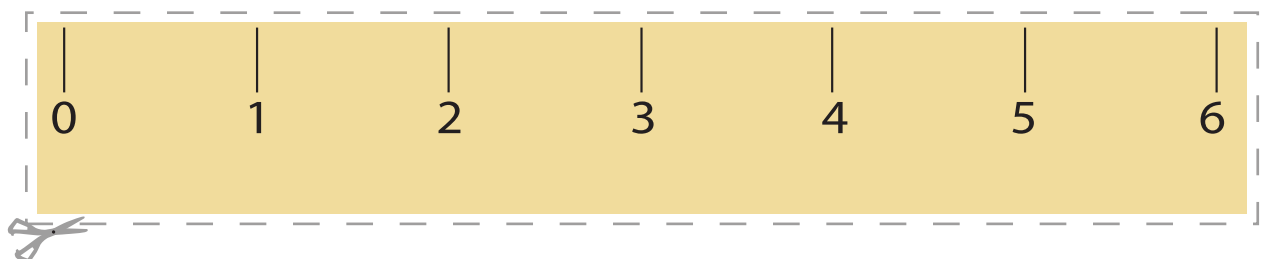
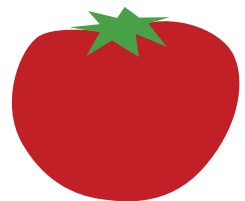
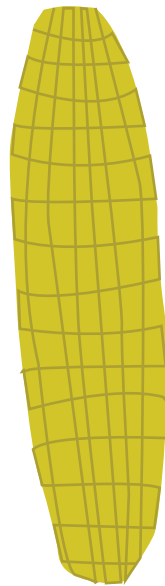
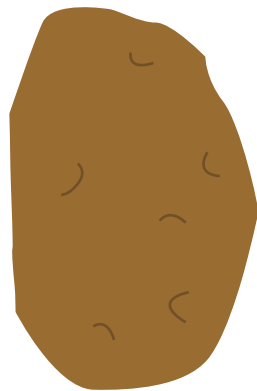
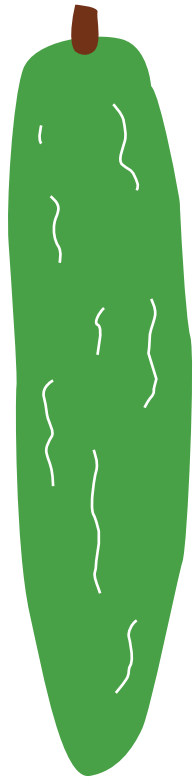


Veggie Garden 1

Cut out the ruler. Measure each vegetable. Write the number of inches in the box under each vegetable.

Circle the shortest vegetable in red.

Circle the longest vegetable in green.

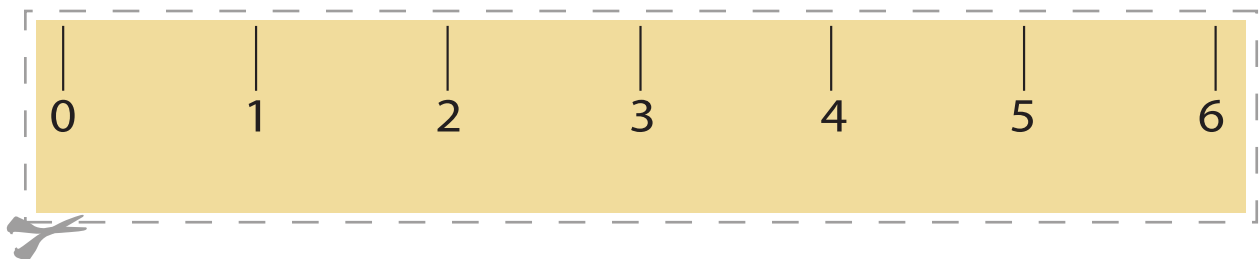
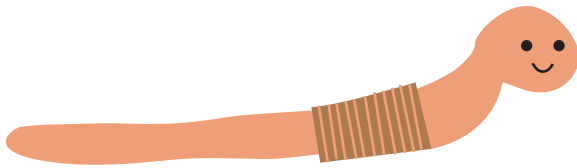


Earthworms!

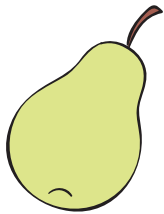
Cut out the ruler. Measure each earthworm. Write the number of inches in the box next to each earthworm.

Circle the shortest earthworm in red.

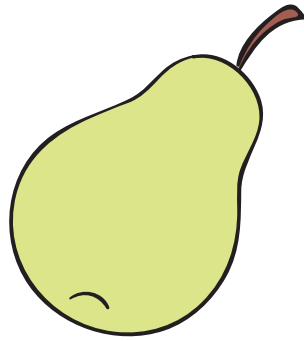
Circle the longest earthworm in green.



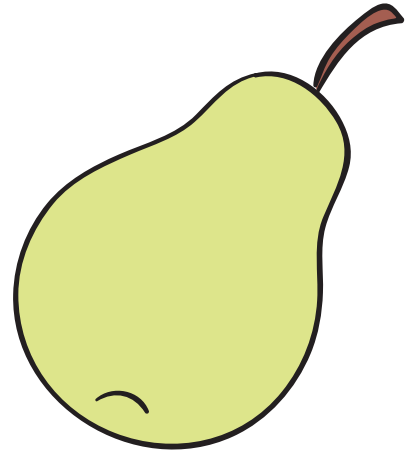
COMPARE SIZES



Small

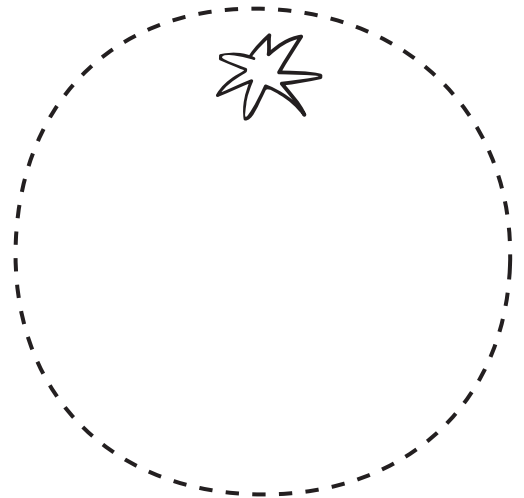
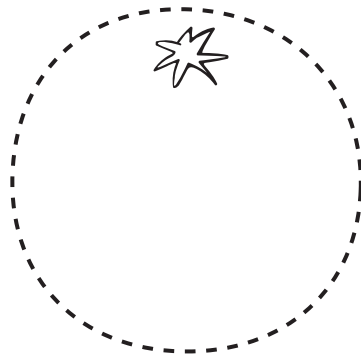
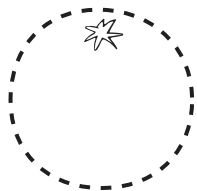
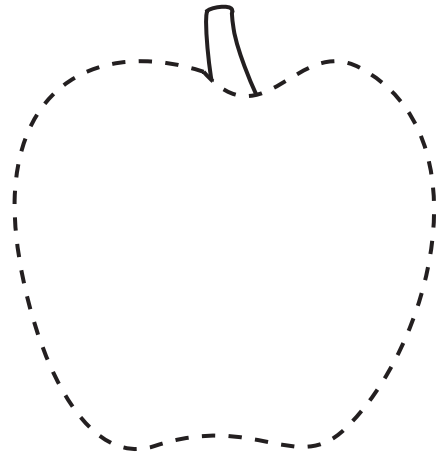
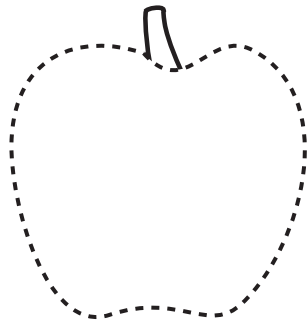
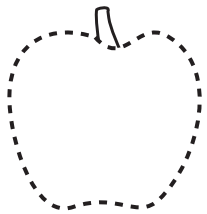


Medium



Large

Trace the fruits.

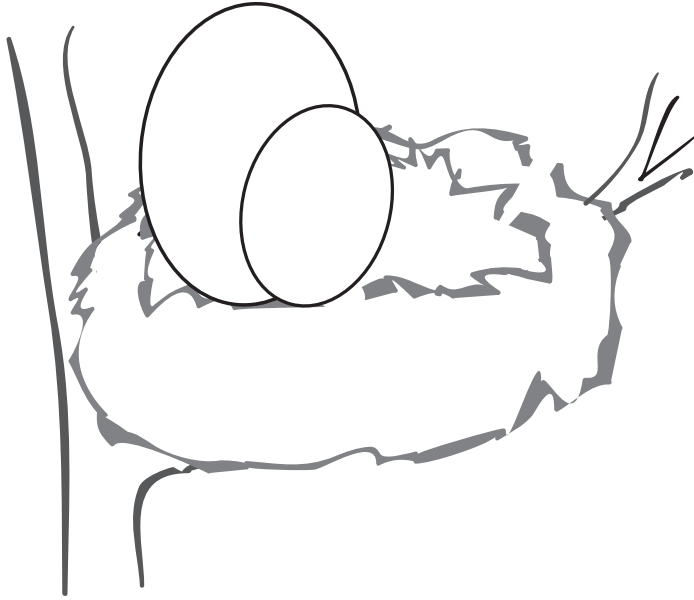


COMPARE SIZES

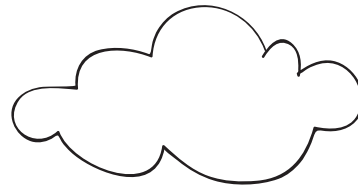
Small Medium Large

Draw the missing pictures and color them.

Draw a small egg in the nest.



Draw a large cloud.



Draw a large umbrella.



Draw a medium wheel.

